

Maharashtra Industry, Trade and Investment Facilitation
Cell (MAITRI)- Gateway to investments in Maharashtra



A Government of Maharashtra Initiative





Introduction

With an objective to attract investment worth INR 5 trillion and 2 million jobs in the **State Industrial Policy 2013**, the Maharashtra Government has launched an Investor Facilitation Cell in February 2014.

Officially named as **Maharashtra Industry, Trade and Investment Facilitation Cell (MAITRI)**, the cell marks a paradigm shift in role of the Government from being a regulator to that of a facilitator. A Government Resolution (ebiz-2013/PK117/Udhyog 8) defines the functioning of MAITRI.

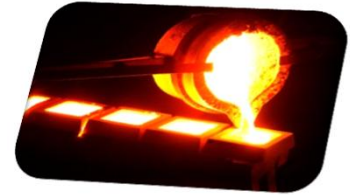
MAITRI's role

Maharashtra Industry, Trade & Investment Facilitation Cell (MAITRI), the Government to Business (G2B) service, is one-stop-shop for existing and prospective investors to get consolidated information about the investment process with regards to expanding their existing manufacturing units or to set up a new manufacturing unit in the State. It primarily caters to the projects with investments worth INR10 crore and above, designated as Large, Mega and Ultra Mega projects under Industrial policy of Maharashtra 2013.

Services offered by MAITRI

- ▶ Coordination with several government agencies in obtaining approvals for 63 services (if unit is in MIDC area) and 66 services (for non MIDC area)
- ▶ Handholding support
- ▶ Grievance redressal
- ▶ Organize regular investment committee meetings where investors can raise their issues and interact with senior government officials

Investor can submit the application to the concerned department or at MAITRI office. Once the application reaches the concerned department, a team of executives at MAITRI will track the progress and closely follow up every single application with the respective departments to get the approvals within the stipulated timeframe as per the citizen charter.





Milestones achieved so far..

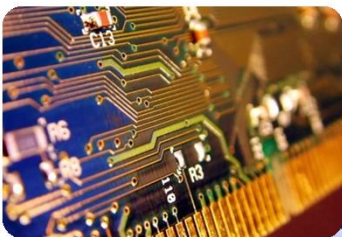
- ▶ Handholding support to more than **25 units** with proposed investment of INR13,000 crore and proposed employment of 14,632.
- ▶ Addressed **338 investor issues**, unlocking investment of more than INR 47,000 Crore and proposed employment of 56,100.
- ▶ **14 investor meetings** done, where over **100 mega units** presented their plan and issues.
- ▶ Over **20 state government departments roped in** to resolve the issues as per citizen charter timeline.
- ▶ **One-of-its-kind investor facilitation cell** in India facilitating manufacturing units across Maharashtra- supporting “Make in Maharashtra” initiative.
- ▶ **Complete online application process** on portal www.maitri.gov.in coming soon, where investors could apply, track application status and receive approvals online.

Other websites for investment prospects in Maharashtra:

<https://industry.maharashtra.gov.in>

<http://www.mahaebiz.com>

<http://www.midcindia.org>



Some of the companies who worked with MAITRI:

Mercedes Benz India Pvt.Ltd (Exp); Ambuja Cement; Bharat Heavy Electricals Ltd; Bombay Dying & Manufacturing Company Ltd.; Forbes Marshall; J.S.W. Ispat Steel Ltd.(Ex); Kirloskar Oil Engine Ltd.; Piaggio Vehicals Pvt. Ptd.; Raymond Uco Denim Pvt. Ltd.; Schindler India Pvt. Ltd.; Thermax Ltd.; Ultratech Cement Ltd.

Figures as on 29th September 2015



MAITRI's support evident through investor's testimonials



<i>" MAITRI is a very good initiative from the Government side for supporting the industries coming up in our State."</i>	Mr. Sudhir Dalvi, Divisional Manager - Corporate EHS & PLS FIAT India Automobiles Pvt. Ltd
<i>" I truly appreciate the motivation given by the Govt. of Maharashtra by taking interest in our due case."</i>	Mr. Aayush Patodia, Director Patodia Forgings and Gears Ltd
<i>"We are very much thankful to you (MAITRI) for helping us on the issue of storage of sand & penalty notice from Tahasildar."</i>	Mr. Anil Sali, Director Ujwal Electric Motors Private Limited
<i>"I appreciate your (MAITRI's) approach towards industrial development in Maharashtra."</i>	Mr. Himanshu Chaudhry, Managing director, Traforadiators & tanks Pvt Ltd
<i>"We sincerely thank MAITRI for all the assistance in getting consent to establish permission from MPCB."</i>	Mr. Ameya Jogalekar, Director Spak Surfactants pvt ltd
<i>"I admire MAITRI's follow up with MPCB to provide revised Consent to Establish to us."</i>	Mr. Yash Kohli, Chairman Lenzing Modi Fibers India Pvt. Ltd
<i>"Thank you very for your (MAITRI's) kind support and valuable guidance and advice."</i>	Mr. Ganesh Powar, General Manager Melting Centre Pvt. Ltd
<i>"Appreciation for MAITRI team for the rigorous follow-up & support provided by the team. Thank you very much for the support we have received from Maitri team so far. We sincerely appreciate it."</i>	Mr. Chinmay Bhandari, Senior Manager Pune Hi-Tech
<i>"Thank you very much for giving support to us in obtaining occupancy certificate / building completion certificate from MIDC. Thanks once again."</i>	Mr. S M Kulkarni, Director Kirloskar Engine Oils
<i>" ..my sincere thanks for taking up issue with SEEPZ-SEZ authorities....and ensuring issuance of the Electricity Duty Exemption Certificate on priority. Thanks to you all MAITRI team members!!"</i>	Mr. Milind R. Shishupal, General Manager, Cummins Group of Companies



List of services available through MAITRI cell

This list contains the services facilitated by MAITRI cell to assist an investor in setting up large or mega project in Maharashtra. (for units in MIDC and non MIDC area-as applicable).

Pre-Commissioning stage			
SI No.	Category	Approval	Department
1	Tax Related Registrations	VAT Registration (TIN)	Sales Tax Dept.
2		CST Registration No.	Sales Tax Dept.
3		Professional Tax Registration	Sales Tax Dept.
4		LBT Registration	Local Body/Finance Department
5	Project Related Approvals	Lol for IT-BT/ ITES / EM I / IEM (Part A) / IL	Directorate of Industries
6		Approval of Mega Project	Industries Dept.
7	Approvals for Land Allotment	Land allotment	Maharashtra Industrial Development Corporation
8		BTAL Permission	Directorate of Industries
9		NA permission for Agriculture Land	District Collector
10		Diversion of land from Forest to Industrial purpose	Forest Department
11		Change in land use in urban areas	Urban Development Department
12		Document Registration	Dept. of Registration & Stamps
13		NOC from Forest Department	Forest Department
14		Coastal Regulation Zone Clearance	Maharashtra Coastal Zone Management Authority
15		NOC from Airport Authority	Airport Authority of India – Maharashtra
16		Tribal Development Plan Approval/ Clearance	Tribal Welfare Commissioner
17		NOC if project site is near the monuments	Department of Cultural Affairs, Directorate of Archaeology
18		NOC under Location Policy (only for MMR region)	Directorate of Industries
19		Permission to mortgage	Maharashtra Industrial Development Corporation
20	Approvals required prior to start of constructions	Consent for setting up captive power plant	Maharashtra State Electricity Distribution Co. Ltd.
21		Environment Clearance	Environment Dept.
22		Consent to Establish	Maharashtra Pollution Control Board
23		Factory Layout Plan Approval	Directorate of Industrial Safety and Health
24		Provisional Fire NOC Approval	Maharashtra Fire Services
25		Power Connection for Construction	Maharashtra State Electricity Distribution Co. Ltd.
26		Water Connection for Construction	Water Resource Department
27		Building Plan Approval	Municipal Corporation/ Gram Panchayat/ District Collector
28		Drainage Plan Approval	Maharashtra Industrial Development Corporation
29	Electricity related approvals	Right of Way for Power Distribution Cables	MSETCL
30		Charging permission for Industries	Public Works Department (Electrical)
31		Approval for Lift / Elevator for Plant (Passenger Lifts)	Public Works Department (Electrical)



List of services available through MAITRI cell

Pre-Commissioning stage			
SI No.	Category	Approval	Department
32	Electricity related approvals	Layout Approvals for DG sets	Public Works Department (Electrical)
33		Registration of Diesel Generator Sets	Public Works Department (Electrical)
		Power / Electrical Connection NOC	Maharashtra Industrial Development Corporation
34		Permission for charging of MESDCL line for more than 650 Volts	Public Works Department (Electrical)
35	Approvals required during the construction phase	NOC for controlled Blasting for Excavation	District Collector
		NOC for soil excavating/ filling	District Collector
36		Permission of Cutting of Non- Scheduled trees under Maharashtra felling of Trees (regulation) Act, 1964) and scheduled trees	Revenue Department and Forest Department
37	Approvals required for support infrastructure	Water Reservation Consent	Irrigation Department
38		Permission/ Clearance for drawing ground water/ drilling for Industrial purposes	Department of Water Supply & Sanitation
39		NOC for Storm Water and Drain	Municipal Corporation (Storm Water and Drain Dept.)
40		Permission for Highway Crossing, access road through highway, right of way etc under Section 278 of the Highways Act 1980	Public Works Department
41		Approval for cutting of footpath/road/road crossing lane/Right of Way	Public Works Department
42		MIDC Permanent Road with Street Lights	Maharashtra Industrial Development Corporation
43	Approvals related to labour safety and health	Conformity of the Project Site to Development Plan and Grant of Licence	Urban Development Department
44		Registration under Factories Act 1948 / Factory License	Directorate of Industrial Safety and Health
45		Registration under Shops and Establishment Act, 1948	Labour Department
46		Permission for Contract Labour / Registration under Contract Labour Act	Labour Department
47		Registration as Employer under Minimum Wages Act, 1936	Labour Department
48		Registration under Building & other Construction Workers (BOCW) Act, 1996	Labour Department
49		Labour Welfare Fund	Labour Department
50		Registration under Trade Union Act, 1926	Labour Department
51		Registration under Industrial Disputes Act, 1947	Labour Department
52		Registration as Co-operative Society	Registrar of Co-op Society
53	Mining activities	MMDR Act 1957 & Mineral Concession Rule 1960- Grant of Reconnaissance Permit; Prospecting License or Mining lease	Department of Geology and Mining



List of services available through MAITRI cell

Post Commissioning stage			
SI No.	Category	Approval	Department
54	Construction Related Approvals	Final Fire NOC Approval	Maharashtra Fire Services/Maharashtra Industrial Development Corporation
55		Building in MC	Municipal Corporation
56		Building in Gram Panchayat/ outside gram panchayat	Gram Panchayat/ District collector
57		Plinth Completion Certificate	Municipal Corporation/ District Collector/Maharashtra Industrial Development Corporation
58		Building Completion Certificate	Municipal Corporation/ District Collector/Maharashtra Industrial Development Corporation
59	Utility and support facility related approvals	Power Connection for Industrial Operations	Maharashtra State Electricity Distribution Co. Ltd.
60		Boiler Permission	Directorate of Boilers
61		Permission for storage of fuel oil & chemicals	Commissionerate of Police / SP
62		Sewerage & Drainage Connection	Municipal Corporation
63		Hazardous Waste Disposal	Maharashtra Enviro Power Ltd.
64		Permission to use spirit	Maharashtra State Excise Department.
65		Permission for charging Diesel Generator Sets for more than 250 KV	Public Works Department (Electrical)
66		Proposal for ETP, STP, CHWT/SDF	Maharashtra Industrial Development Corporation
67	Approval for Weight & Measures	Legal Metrology Department/ Food , Civil Supplies and Consumer Protection Dept.	
68	Consent to Operate	Maharashtra Pollution Control Board	
69	Approvals related to labour safety and health	Approval for Registration of the establishment under the Inter State Migrant Workmen Act 1979 and 1980	Labour Department
70		Approval for Registration of the establishment under the Payment of Gratuity Act 1972	Labour Department
71		Registration under Motor Transportation Act	Labour Department
72		Registration under Mathadi Act	Labour Department
73	Registration of Employees for Apprenticeship	Directorate General of Employment & Training (DGE&T)/ Labour Department	
Post Production stage			
74		Registration as packers under Legal Metrology (Packaged Commodities) Rules 2011 Concession Rule 1960 Grant of Reconnaissance Permit Prospecting License of Mining Lease	Legal Metrology Department/ Food , Civil Supplies and Consumer Protection Dept.
75		Registration of IT-BT/ ITES / EM II / IEM (Part B) / IL	Directorate of Industries
76		Approval from Traffic & Coordination Department (Municipal); if the project involves disruption of general traffic movement	Traffic Department

*Come invest in land of opportunities-
Maharashtra*



Maharashtra Industry, Trade and Investment Facilitation Cell (MAITRI)
C/o. Maharashtra State Small Scale Industries Development Corporation (MSSIDC),
'Krupanidhi' Building, 9, Walchand Hirachand Marg,
Ballard Estate, Mumbai – 400038
Tel: 022- 22622322, 22622362
Email ID: ifc@mahaebiz.com